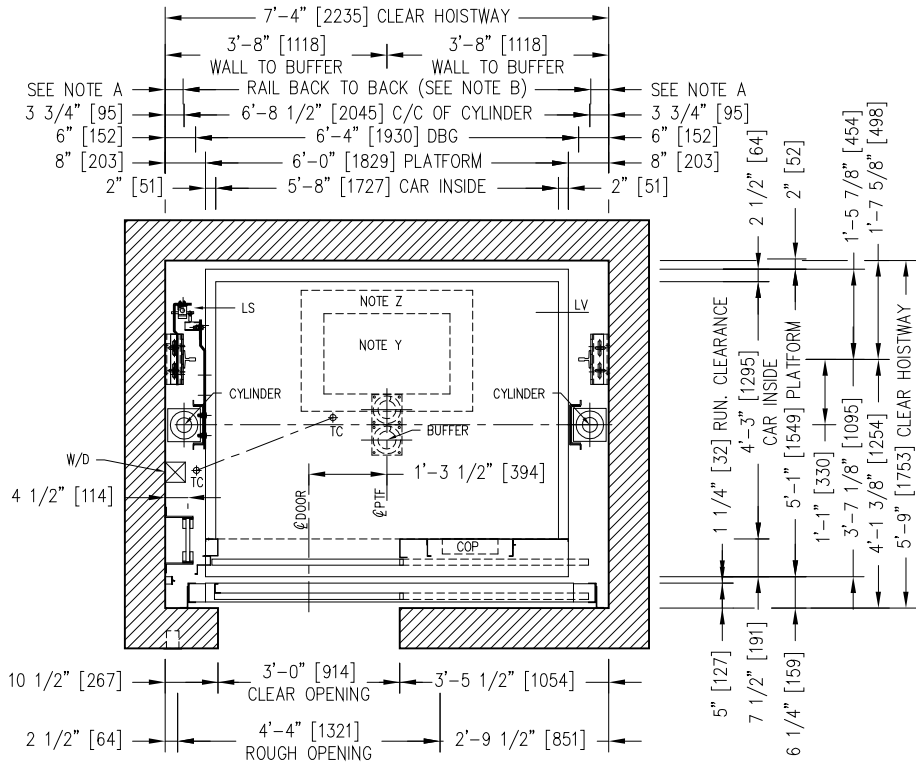


HOISTWAY PLAN VIEW



LEFT HAND

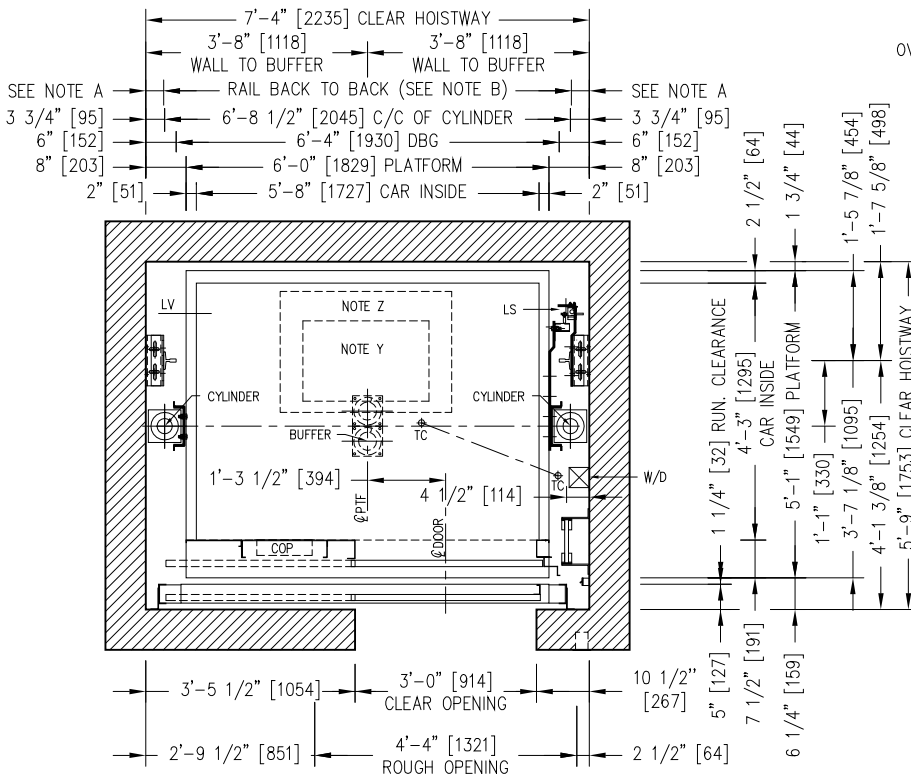
	NOTE A	NOTE B
RAIL 8 LBS :	3 15/16"	6'-8 1/8"
RAIL 12 LBS :	2 7/8"	6'-10 1/4"

NOTE Y: EMERGENCY EXIT 25" x 16" [635 x 406]
 NOTE Z: REFUGE AREA 34" x 24" [864 x 609]

NOTE: _____

PIT: _____

OVERHEAD: _____



RIGHT HAND

REV.:	DATE:	DESCRIPTION:	BY:
DRAWING NAME: ELEVATOR LAYOUT PLAN VIEW			
ELEVATOR(S) NUMBER:			
DETAILS: TWIN JACK DIRECT 2100 LBS [953 Kg] KIT LIFT PACKAGE LS-Y2K FRONT OPENING / SSP 36" x 84"			
PROJECT NAME:			
LOCATION:			
LE GROUPE MANUFACTURIER D'ASCENSEURS GLOBAL TARDIF ELEVATOR MANUFACTURING GROUP			
DRAWN BY:	VERIFIED BY:	DATE:	SCALE: N.T.S.
REF.:	DRAWING #:	SHEET:	REV: