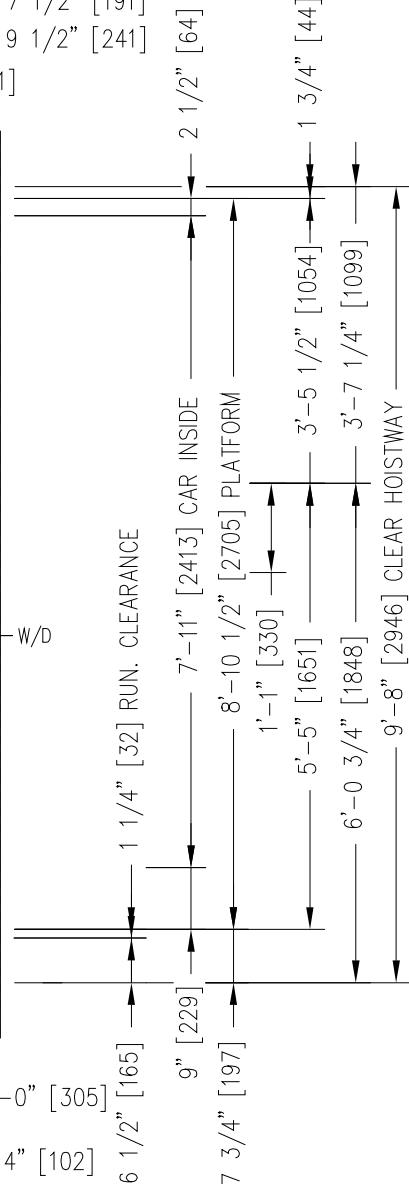
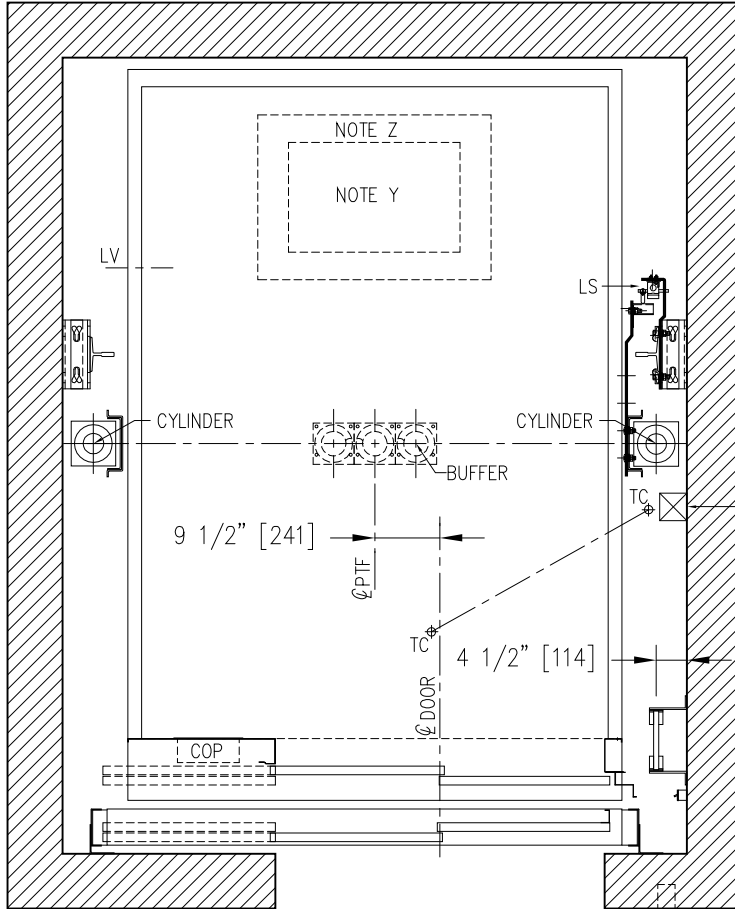


**HOISTWAY PLAN VIEW**

- 7'-7" [2311] CLEAR HOISTWAY
- 3'-9 1/2" [1156] WALL TO BUFFER
- 3'-9 1/2" [1156] WALL TO BUFFER
- 4" [102]
- 6'-11" [2108] RAIL BACK TO BACK
- 4" [102]
- 4 1/2" [114]
- 6'-10" [2083] C/C OF CYLINDER
- 4 1/2" [114]
- 7 1/2" [191]
- 6'-4" [1930] DBG
- 7 1/2" [191]
- 9 1/2" [241]
- 6'-0" [1829] PLATFORM
- 9 1/2" [241]
- 2" [51]
- 5'-8" [1727] CAR INSIDE
- 2" [51]



- 2'-7" [787]
- 1'-11" [584]
- 5'-4" [1626] ROUGH OPENING
- 4" [102]
- 4'-0" [1219] CLEAR OPENING
- 1'-0" [305]

**RIGHT HAND**

NOTE Y: EMERGENCY EXIT 25" x 16" [635 x 406]  
 NOTE Z: REFUGE AREA 34" x 24" [864 x 609]

NOTE: \_\_\_\_\_  
 PIT: \_\_\_\_\_  
 OVERHEAD: \_\_\_\_\_

REV.:	DATE:	DESCRIPTION:	BY:
DRAWING NAME: ELEVATOR LAYOUT PLAN VIEW			
ELEVATOR(S) NUMBER:			
DETAILS: TWIN JACK DIRECT 4500 LBS [2000Kg] KIT LIFT PACKAGE LS-Y2K FRONT OPENING / TSP 48" x 84"			
PROJECT NAME:			
LOCATION:			
LE GROUPE MANUFACTURIER D'ASCENSEURS <b>GLOBAL TARDIF</b> ELEVATOR MANUFACTURING GROUP			
DRAWN BY:	VERIFIED BY:	DATE:	SCALE: N.T.S.
REF.:	DRAWING #:	SHEET:	REV: