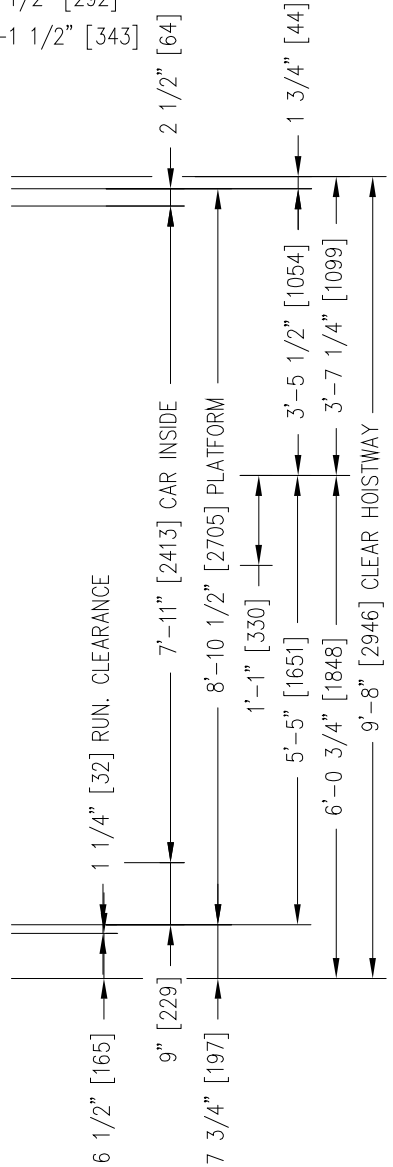
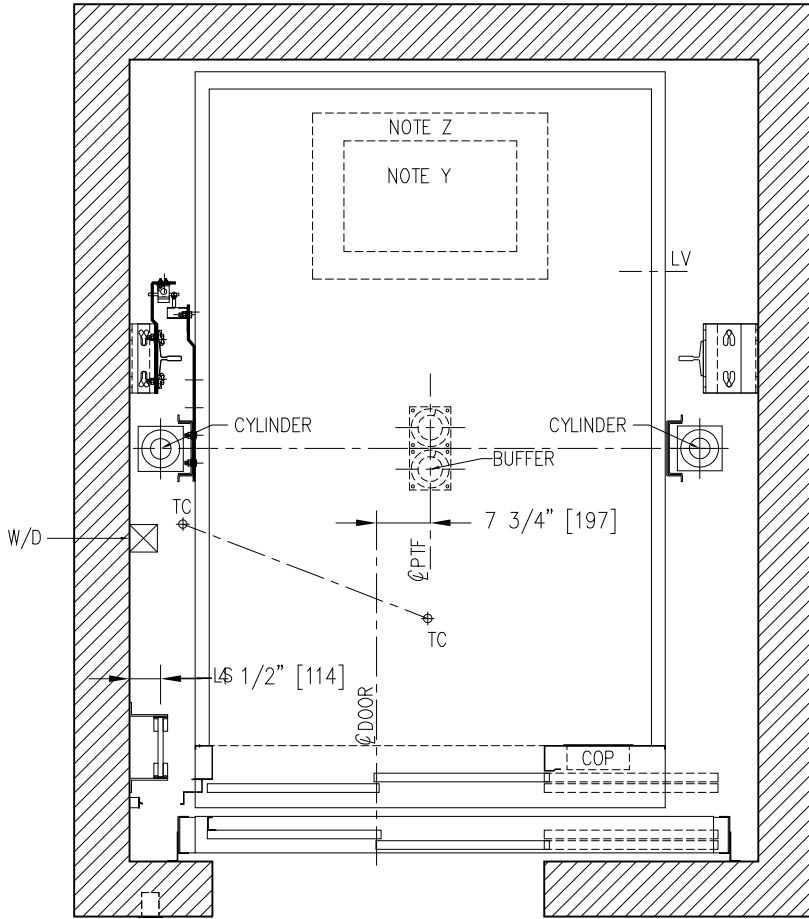


HOISTWAY PLAN VIEW

- 7'-7" [2311] CLEAR HOISTWAY
- 3'-7 1/2" [1105] WALL TO BUFFER 3'-11 1/2" [1207] WALL TO BUFFER
- 4" [102] 6'-7" [2007] RAIL BACK TO BACK 8" [203]
- 4 1/2" [114] 6'-6" [1981] C/C OF CYLINDER 8 1/2" [216]
- 7 1/2" [191] 6'-0" [1829] DBG 11 1/2" [292]
- 9 1/2" [241] 5'-8" [1727] PLATFORM 1'-1 1/2" [343]
- 2" [51] 5'-4" [1626] CAR INSIDE 2" [51]



- 1'-0" [305] 4'-0" [1219] CLEAR OPENING 2'-7" [787]
- 4" [102] 5'-4" [1626] ROUGH OPENING 1'-11" [584]

LEFT HAND

NOTE Y: EMERGENCY EXIT 25" x 16" [635 x 406]
 NOTE Z: REFUGE AREA 34" x 24" [864 x 609]

NOTE: _____

 PIT: _____
 OVERHEAD: _____

| | | | |
|---|--------------|--------------|---------------|
| REV.: | DATE: | DESCRIPTION: | BY: |
| DRAWING NAME: ELEVATOR LAYOUT PLAN VIEW | | | |
| ELEVATOR(S) NUMBER: | | | |
| DETAILS: TWIN JACK DIRECT 4000 LBS [1800Kg] KIT LIFT PACKAGE LS-Y2K FRONT OPENING / TSP 48" x 84" | | | |
| PROJECT NAME: | | | |
| LOCATION: | | | |
| LE GROUPE MANUFACTURIER D'ASCENSEURS GLOBAL TARDIF ELEVATOR MANUFACTURING GROUP | | | |
| DRAWN BY: | VERIFIED BY: | DATE: | SCALE: N.T.S. |
| REF.: | DRAWING #: | SHEET: | REV: |